



*jordan fishwick*

4 Prestbury Road, SK9 2LJ  
Guide Price £1,690,000



## Prestbury Road Wilmslow SK9 2LJ

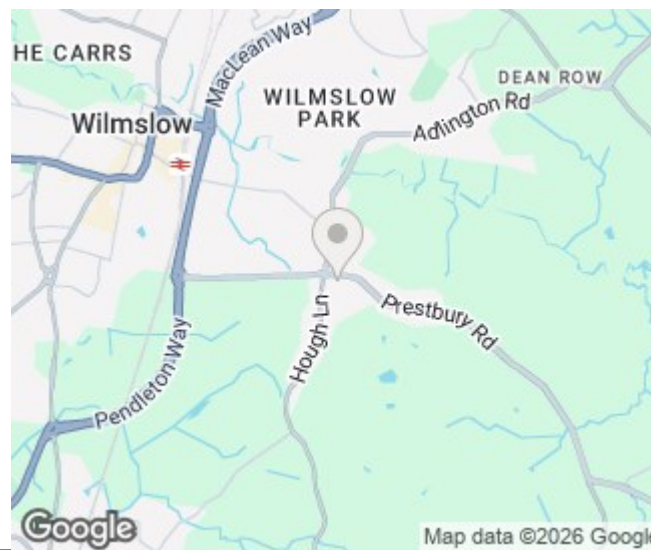
Guide Price £1,690,000




Offering approximately 4200 sq ft of internal accommodation this individual detached residence located on the highly desirable Prestbury Road is set within a substantial 0.88 acres. This delightful property is approached via a Yorkstone driveway with twin electric gates facilitating enhanced vehicular access with its in and out driveway. Positioned behind a mature hedgerow the property benefits from a high degree of privacy, boasting six bedrooms, four bathrooms/ensuites, a self-contained Annex and an impressive orangery comprising of a kitchen diner fitted and designed by Kuchen Haus and forms a sociable family space with magnificent views towards the impressive and mature garden. This property has impressive qualities throughout and furthermore had planning permission obtained (now lapsed) for a generous two story extension intended to further increase the bedroom and living spaces. To the rear of the property, there is a substantial and landscaped garden featuring two distinct sections, the first being laid mainly to lawn with three composite decked terraces and a feature pond all surrounded by mature shrubs and trees creating privacy. The second section of the garden has a large lawned area and is fully fitted with a 3G football pitch, perfect for those active families. To find out more contact us to arrange a private viewing and to truly appreciate what an opportunity there is with with this impressive family home.



- Substantial Gardens (0.88 Acres Approx)
- Detached Residence
- Secluded 3G Football Pitch
- Separate Annex
- Landscaped Gardens
- Highly Desirable Location
- Gated Driveway

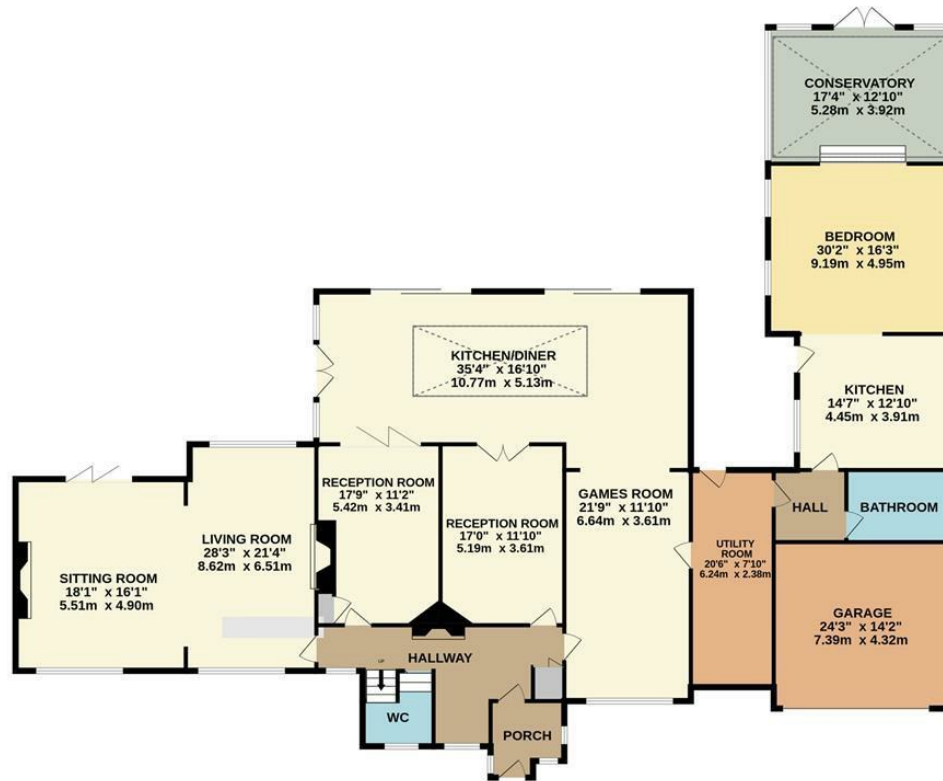


Energy Efficiency Rating		
	Current	Potential
Very energy efficient - lower running costs		
(92 plus) <b>A</b>		
(81-91) <b>B</b>		
(69-80) <b>C</b>		
(55-68) <b>D</b>		<b>66</b>
(39-54) <b>E</b>	<b>43</b>	
(21-38) <b>F</b>		
(1-20) <b>G</b>		
Not energy efficient - higher running costs		
<b>England &amp; Wales</b>	EU Directive 2002/91/EC 	





GROUND FLOOR



1ST FLOOR



Measurements are approximate. Not to scale. Illustrative purposes only  
Made with Metropix ©2025



These particulars are believed to be accurate but they are not guaranteed and do not form a contract. Neither Jordan Fishwick nor the vendor or lessor accept any responsibility in respect of these particulars, which are not intended to be statements or representations of fact and any intending purchaser or lessee must satisfy himself by inspection or otherwise as to the correctness of each of the statements contained in these particulars. Any floorplans on this brochure are for illustrative purposes only and are not necessarily to scale.

Offices at: Chorlton, Didsbury, Disley, Hale, Glossop, Macclesfield, Manchester Deansgate, Manchester Whitworth Street, New Mills, Sale, Wilmslow and Withington

36-38 Alderley Road, Wilmslow SK91JX  
**01625 532000**

wilmslow@jordanfishwick.co.uk  
www.jordanfishwick.co.uk